



Preparation

OUTLANDER PHEV
MITSUBISHI
REMOTE CONTROL



To use the exclusive MITSUBISHI Remote Control App you need to register your wireless device and vehicle.

Registration Procedure

- STEP1 Setup your vehicle and wireless device so they can be registered.
- STEP2 Setup your vehicle and wireless device to communicate wirelessly.
- STEP3 Register wireless device with your vehicle.

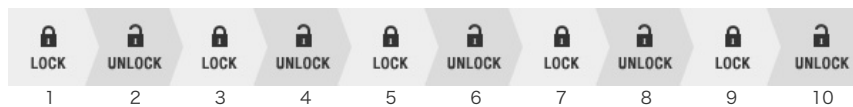
Your vehicle and wireless device communicate directly.

You do not have to access a public Wi-Fi spot or prepare any Wi-Fi routers at your home.

STEP1 Setup your vehicle and wireless device so they can be registered

(Perform this operation while the driver-side door is closed.)

Turn the power switch to ACC, then within 10 seconds, press LOCK and UNLOCK on the key fob alternately 10 times in total.



Registration State Status

A meter buzzer sounds according to the number of the registered wireless device.

→Registration State Status ends 5 minutes after the buzzer sounds,

(Up to 2 devices can be registered.)

- No registration : 1 beep
- 1 device has been registered : 2 beeps
- 2 devices have been registered : 3 beeps



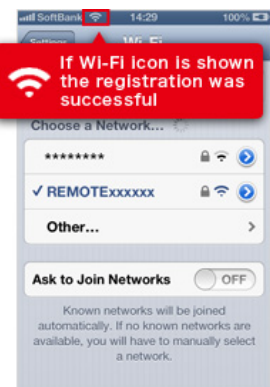
Start of Wireless Communication

When you search for the network through your wireless device, SSID "REMOTExxxxx" is displayed.

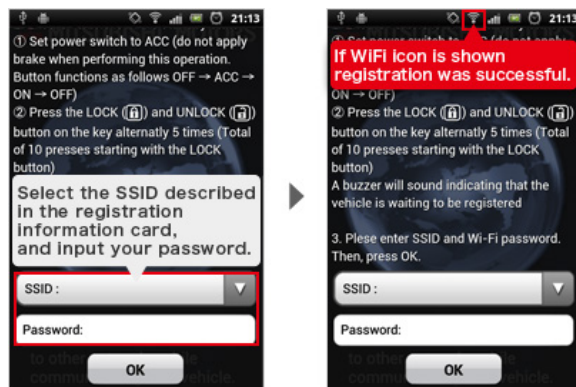
It may take several minutes before SSID is displayed.

STEP2 Start of Wireless Communication

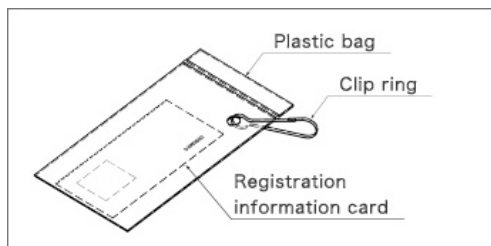
iOS



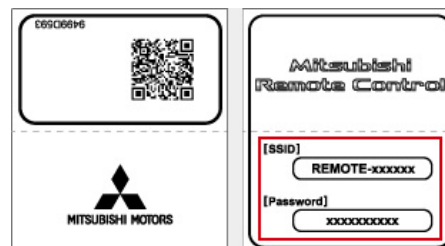
Android



Password and SSID (Network Name) are described in the registration information card (attached to the key fob).



attached to the Key Fob



Registration information card

The actual SSID is "REMOTExxxxxx", not "REMOTE-xxxxxx".

[Attention]

Please keep the registration information card in a secure location.

STEP3 Register wireless device with your vehicle

This operation differs between iOS and Android. Please follow directions corresponding to your wireless device.

iOS Device

Connect wireless device to your car.

When you search the network with your wireless device, you can find SSID "REMOTExxxx". Then, you can input your password. (SSID and password are described in the registration information card.)

Start up MITSUBISHI Remote Control.

Registration starts automatically.

(It may take about 1 minute before the registration is completed.)
After the registration is completed, the registration completion screen is displayed on the app.

Android Device

Start up MITSUBISHI Remote Control.

Select SSID, and input your password.

(SSID and password are described in the registration information card.)

Registration starts automatically.

(It may take about 1 minute before the registration is completed.)
After the registration is completed, the registration completion screen is displayed on the app.

Registration has been completed.

A registration completed message is displayed on wireless device.

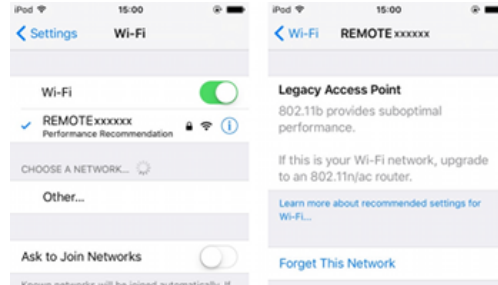
Turn off the power switch of your vehicle to complete the registration.

A registration completed message is displayed on wireless device.

To register a 2nd device, exit the app once or terminate the connection to Wi-Fi communication, then conduct the same registration operation for the next wireless device.

[Attention]

It has no problem because in iOS 10 or later devices, Wi-Fi setting screen of OS "Performance Recommendation" is indicate but, it is not effect in wireless LAN communication of vehicle.



On some Android devices, you may not be able to register. In this case, please check the Android OS settings and turn the following settings "OFF". (Depending on the device, setting sequence and display items may be different. For more information, please contact the device manufacturer.)

"Settings" - "Wi-Fi" - "Advanced"
"Smart network switch" > OFF
"Auto network switch" > OFF
"Check for Internet service" > OFF

In Android 6.0 or later devices, you may not be able to register. In this case, please delete the Wi-Fi profile for the vehicle. (If you use the MITSUBISHI Remote Control for the first time, it is not necessary to do this procedure.)

"Settings" - "Wi-Fi" - Select your vehicle "SSID"
If a "FORGET" button is appears, please tap "FORGET"



Delete Registration (Initialization Process)

OUTLANDER PHEV
MITSUBISHI
REMOTE CONTROL



You can initialize and delete the registration information in your vehicle for the MITSUBISHI Remote Control. (Reset to the factory setting.)

If you delete the vehicle registration of wireless LAN device, you must setting initialize below.

- The vehicle SSID. (The registration information card will be setting.)
- The schedules of Charge Timer Settings and Climate Timer Settings.
- Wireless LAN communication will be stopped of vehicle. (Your wireless device will not find the vehicle SSID when searching for it.)

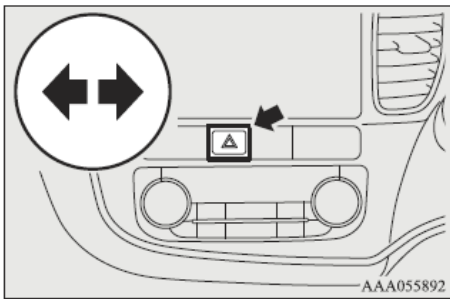
If you need to only delete a specific registration of wireless device, it is necessary to use the "Cancel VIN Registration" in "Settings" of the MITSUBISHI Remote Control App.

Procedure of registration deletion

- STEP1 Turn on Hazard lamp.
STEP2 Setup your vehicle to delete the registration information.
STEP3 Delete the registration information.

STEP1 Turn on Hazard lamp.

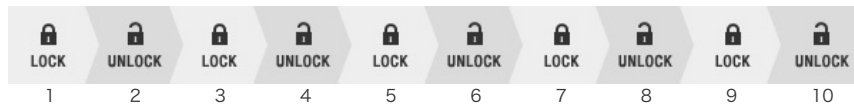
Turn on Hazard lamp switch.



STEP2 Setup your vehicle to delete the registration information.

(Perform this operation while the driver-side door is closed.)

Turn the power switch to ACC, then within 30 seconds, press LOCK and UNLOCK on the key fob alternately 10 times in total.



Registration deletion Mode

Buzzer sounds according to the number of the registered wireless LAN devices.

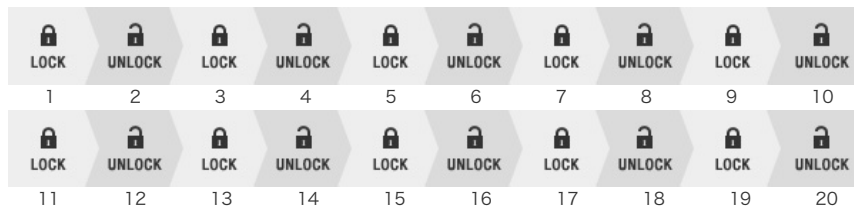
"Registration Deletion Mode" ends 5 minutes after the buzzer sounds.

- No registration : 1 beep
- 1 device has been registered : 2 beeps
- 2 devices have been registered : 3 beeps



STEP3 Delet the registration information.

Enter "Registration Deletion Mode," then within 5 minutes, press the LOCK and UNLOCK on the key fob alternately 20 times in total.



Deletion of registration information

Buzzer sounds if registration information is deleted completely. (1beep)

"Registration Deletion Mode" ends by turning off the Hazard lamp and pressing the power switch to OFF.

If you want to continue to use the MITSUBISHI Remote Control App after the registration information is deleted from the vehicle, it is necessary to use the "Cancel VIN Registration" in "Settings" of the MITSUBISHI Remote Control App, and you need to register your wireless device to your vehicle again.

➤ [Back to TOP](#)

[Overview](#)

[Preparation](#)

[Home Screen](#)

[Timer Screen](#)

[Status Screen](#)

[Vehicle Operation Screen](#)

[Settings](#)